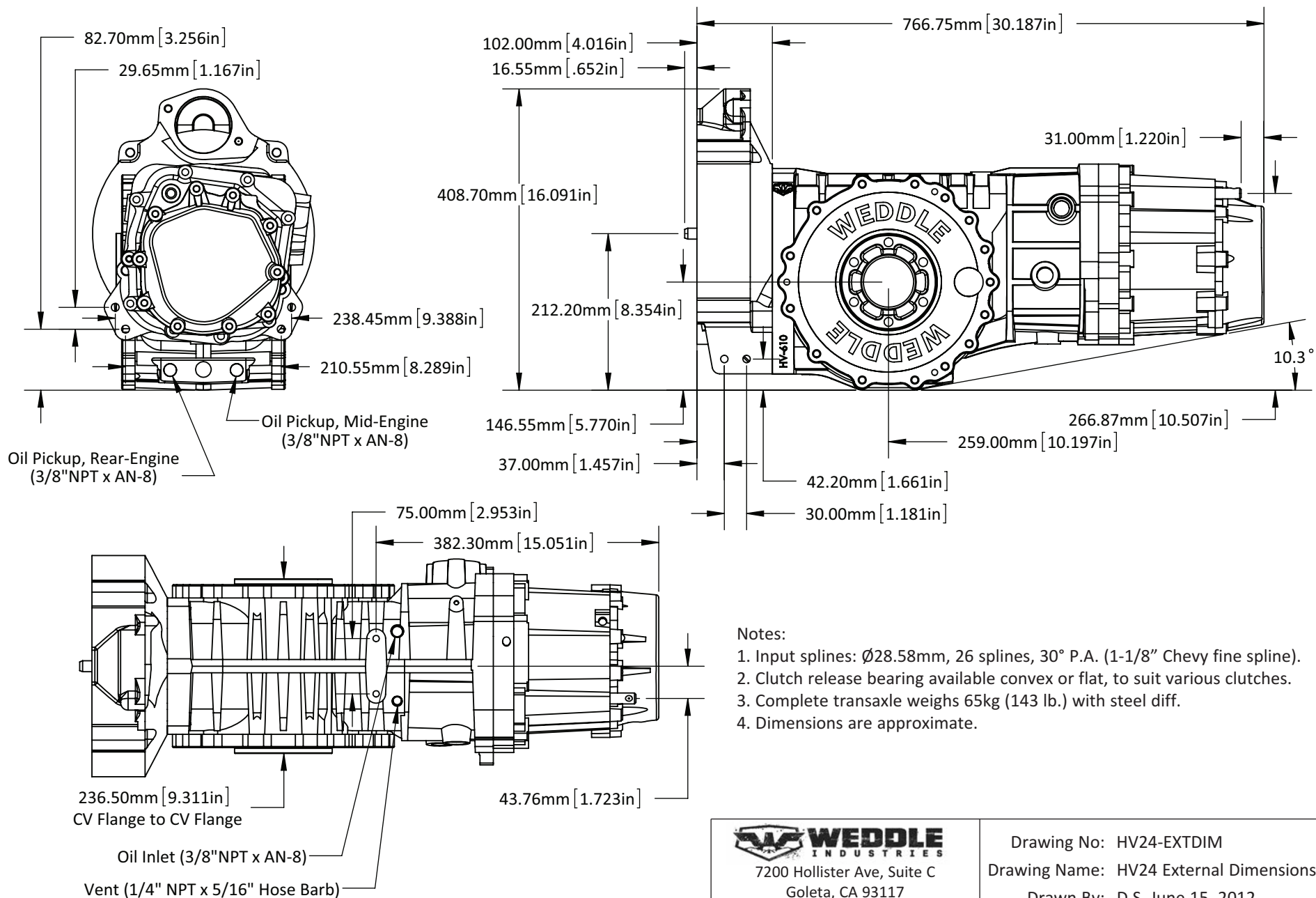


# HV24 TRANSAXLE EXTERNAL DIMENSIONS



**Notes:**

1. Input splines: Ø28.58mm, 26 splines, 30° P.A. (1-1/8" Chevy fine spline).
2. Clutch release bearing available convex or flat, to suit various clutches.
3. Complete transaxle weighs 65kg (143 lb.) with steel diff.
4. Dimensions are approximate.



7200 Hollister Ave, Suite C  
Goleta, CA 93117  
Ph 805-562-8600 • Fax 805-562-8661  
info@weddleindustries.com

Drawing No: HV24-EXTDIM  
Drawing Name: HV24 External Dimensions  
Drawn By: D.S. June 15, 2012  
Revised: