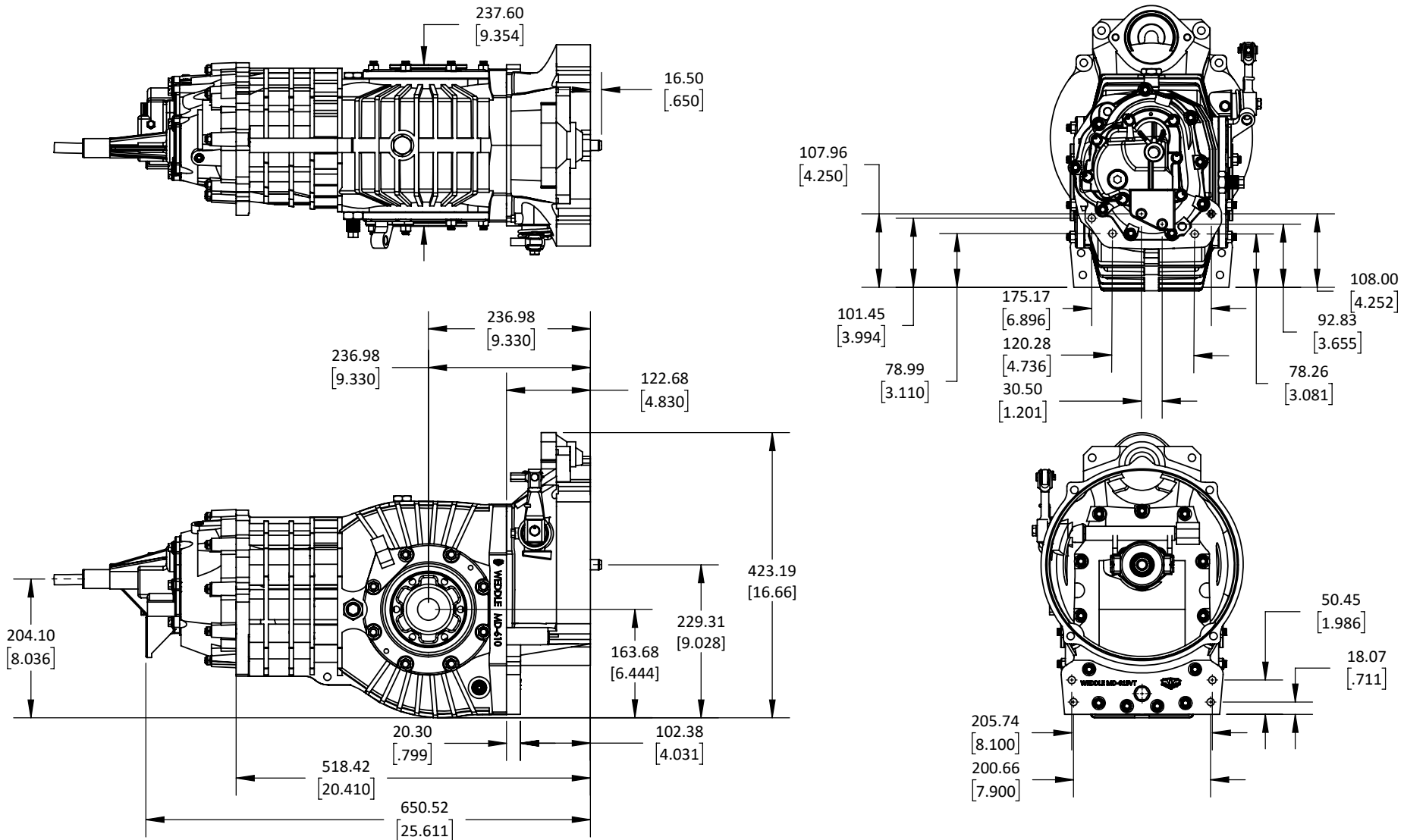


WEDDLE MD2D EXTERNAL REFERENCE DIMENSIONS



Notes:

1. Dimensions are approximate.
2. Input splines: \varnothing 25.40mm, 23 splines, 30° P.A. (Porsche G50 splines)
3. Complete transaxle weights 57 kg (126lb.)



7200 Hollister Ave, Suite C
 Goleta, CA 93117
 Ph 805-562-8600 • Fax 805-562-8661
 info@weddleindustries.com

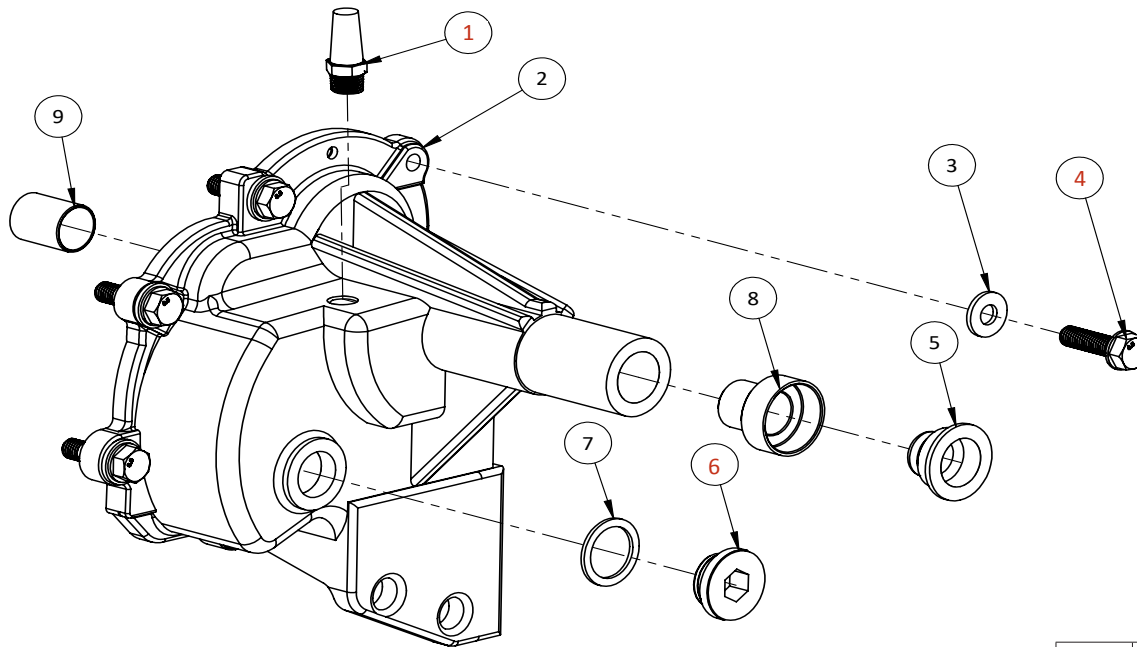
Drawing No: MD-DIM-MD2D
 Drawing Name: MD2D External Reference Dims
 Drawn By: DL
 Revised: 3/17/2022



7200 Hollister Ave, Suite C
 Goleta, CA 93117
 Ph 805-562-8600 • Fax 805-562-8661
 info@weddleindustries.com

Drawing No: MD2D-EXP-605
 Drawing Name: MD2D Nosecone Exp View
 Drawn By: DL
 Revised: 4/7/2025

MD2D NOSECONE EXP VIEW



The MD2D transaxle has been supplied with both OE VW and aftermarket nosecones. Seal and bushing replacement may require a combination of the listed bushings and seals.

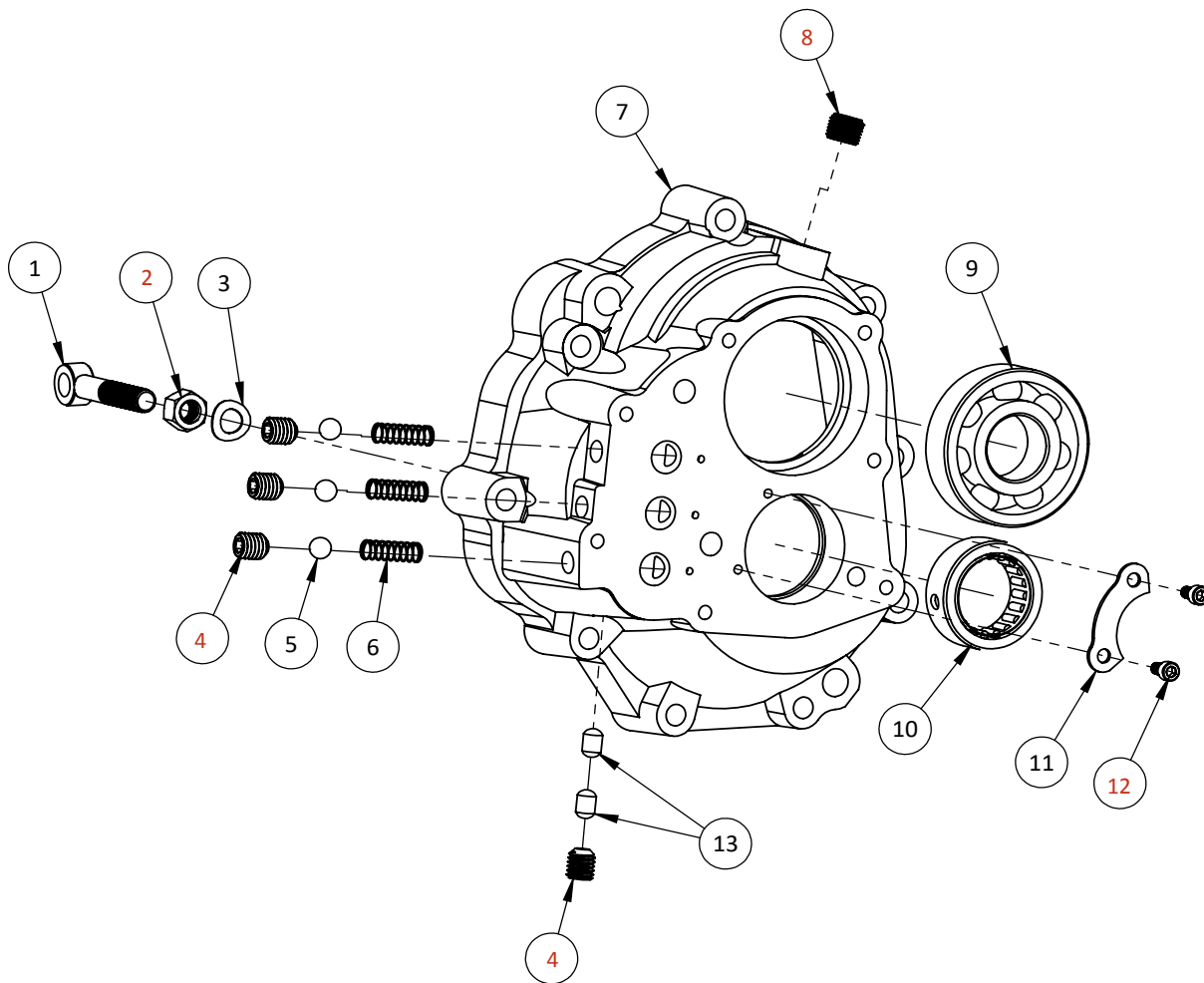
ITEM	PART NO.	DESCRIPTION	QTY
1	H-VENT-18PXCONC	Transmission Breather Seal threads with 3-Bond sealant or equivalent	1
2	MD2D-605	Aluminum Nosecone	1
3	H-WM7	M7 Flat Washer, Hardened	7
4	H-BM7X25H	Bolt for Nosecone Torque to 14 ft. lb. Loctite 243 (blue)	7
5	080-301-225-2	Nosecone Seal	1
(5)	001-301-227	Nosecone Seal, OE VW Nosecone	1
6	113-301-229-A	Plug for Backup Light Switch Hole Torque to 35-40 ft. lb.	1
7	N-013-816-1	Sealing Washer	1
8	001-301-209	Late Front Nosecone / Seal Holder	1
(8)	001-301-209-A	Seal Holder / Bushing for '61-'66 Nosecone	1
(8)	001-301-209-C	Seal Holder / Bushing for '67-'68 Nosecone	1
9	001-301-207	Late Rear Nosecone Bushing	2
(9)	111-301-207	Early Nosecone Bushing	1



7200 Hollister Ave, Suite C
 Goleta, CA 93117
 Ph 805-562-8600 • Fax 805-562-8661
 info@weddleindustries.com

Drawing No: MD2D-EXP-607
 Drawing Name: MD2D Gear Carrier Exp View
 Drawn By: DL
 Revised: 3/17/2022

MD2D GEAR CARRIER EXP VIEW



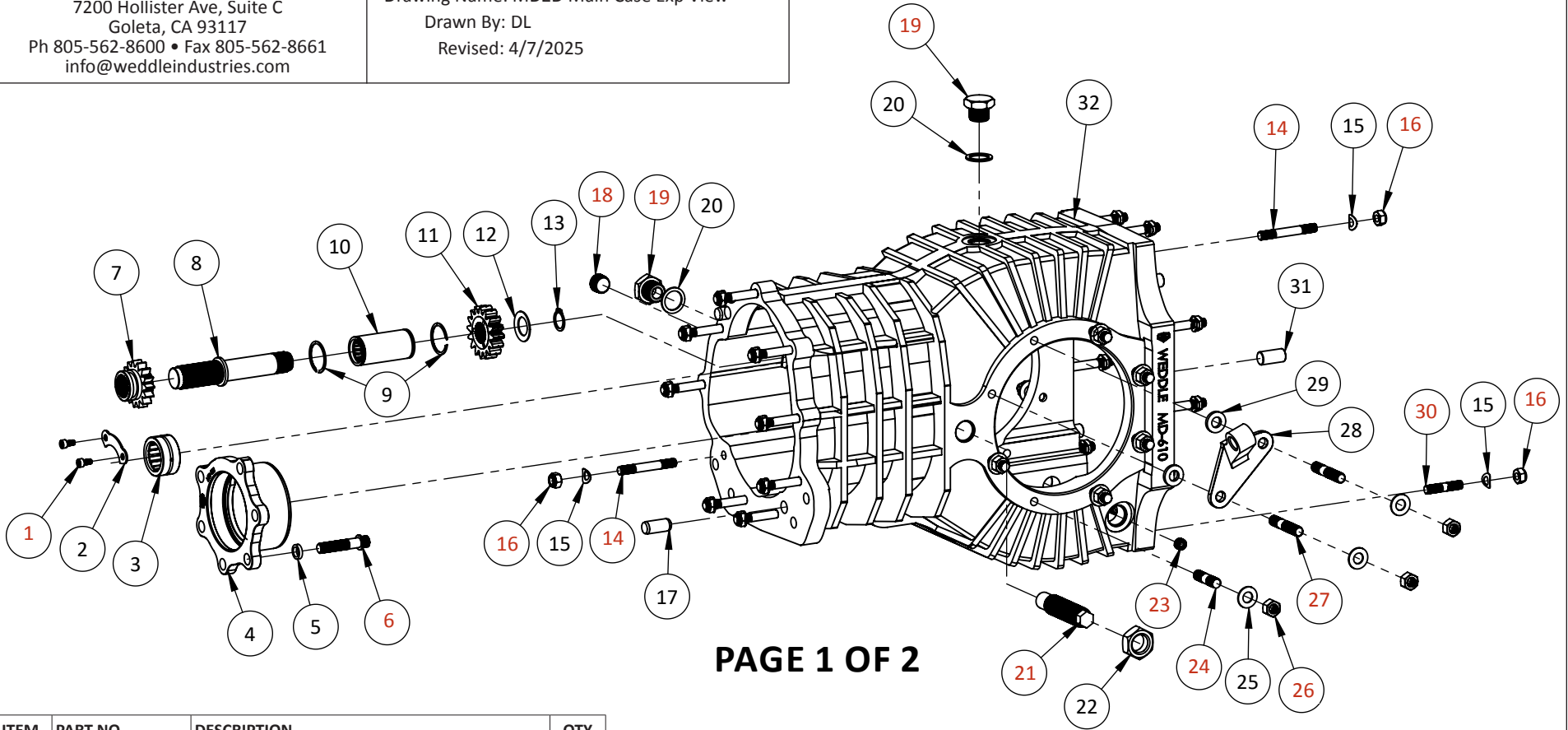
ITEM	PART NO.	DESCRIPTION	QTY
1	113-301-177	Reverse Eye Bolt	1
2	MD-980	M10X1.5 With 15MM Hex Loctite 243 (blue)	1
3	H-WM10-WAVE	10MM Wave Washer	1
4	MD2D-607-1	MD4-2D Detent Plug (For Gear Carrier Housing) Torque to 16 ft. lb. with 3-BOND Sealant	4
5	N-025-667-2	Detent Ball (9mm)	3
6	111-307-625	Detent Spring	3
7	MD2D-607	MD2D Gear Carrier Housing	1
8	H-PLUG-14PISD	1/4" Pipe Plug Internal Socket Drive Torque to 18 ft. lb. with 3-BOND sealant	1
9	MD2D-425	Front Mainshaft Bearing	1
10	MD5-401	Front Pinion Bearing Use with MD2D-424 bearing race	1
11	MD2D-993	Bearing Retainer Plate	1
12	H-B10240375SH	10-24 X 3/8" Socket Head Bolt Torque to 70 in. lb. with Loctite 243 (blue)	2
13	111-307-629	Type 1 Shift Rail Interlock	2



7200 Hollister Ave, Suite C
Goleta, CA 93117
Ph 805-562-8600 • Fax 805-562-8661
info@weddleindustries.com

Drawing No: MD2D-EXP-610
Drawing Name: MD2D Main Case Exp View
Drawn By: DL
Revised: 4/7/2025

MD2D MAIN CASE EXP VIEW



PAGE 1 OF 2

ITEM	PART NO.	DESCRIPTION	QTY
1	H-B10240375SH	10-24 X 3/8" Socket Head Bolt <i>Torque to 70 in. lb. with Loctite 243 (blue)</i>	2
2	MD2D-993	Bearing Retainer Plate	1
3	MD2D-431	Rear Mainshaft Bearing New Design 1.5"OD	1
(3)	MD2D-430	2D Rear Mainshaft Bearing Old Design 1.315"OD	1
4	MD-402HD	Pinion Bearing Carrier	1
5	MD-956	3/8" High Collar Lock Washer	6
6	H-B38241750FC	Pinion Retainer Bolt <i>Torque to 38 ft. lb. with Loctite 272 (Red)</i>	6
7	3R4M-1540	15T Reverse Gear Modified	1
8	091-311-515	Reverse Idler shaft	1
9	113-311-527	Circlip For Rev. Idler Assembly	2
10	002-311-523-A-U	Bearing Assembly for Reverse Idler Shaft	1

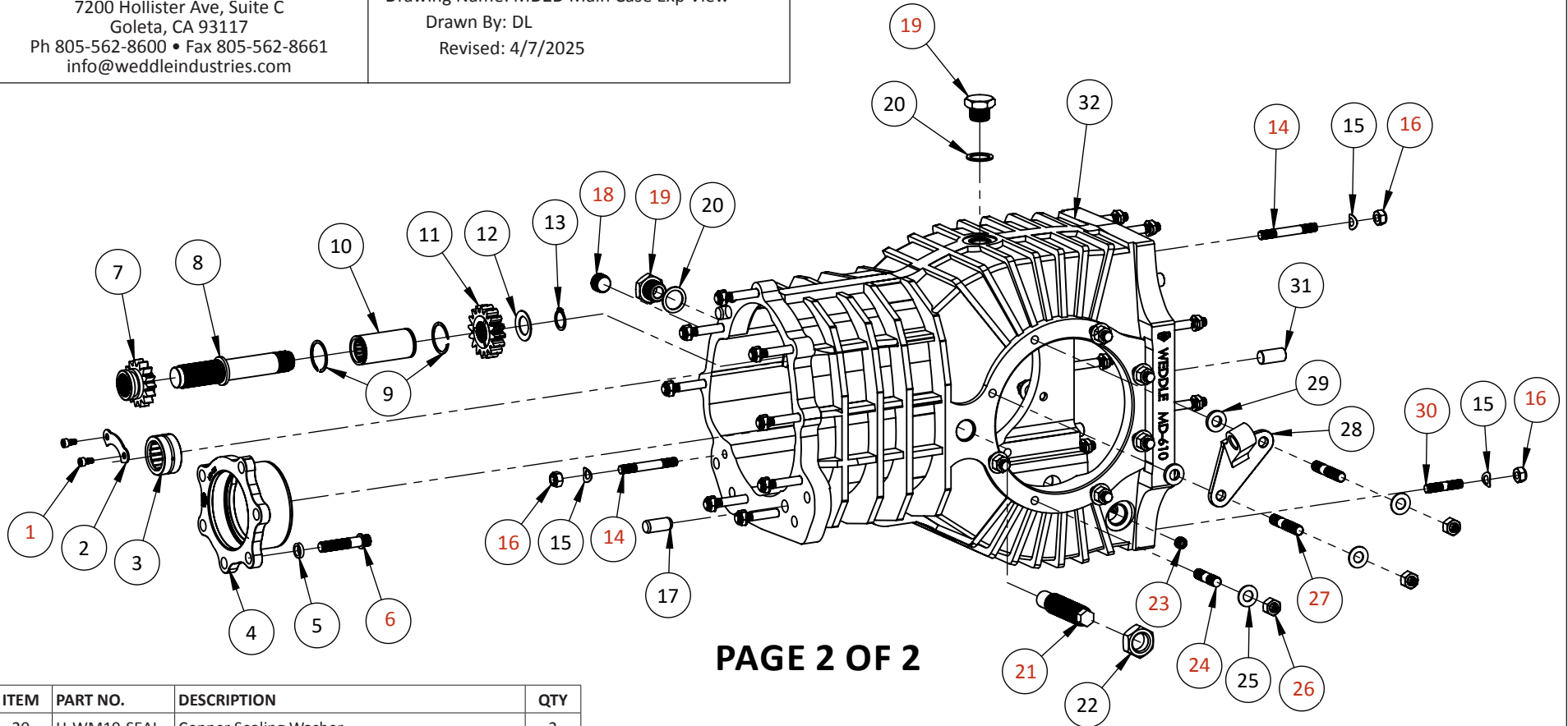
ITEM	PART NO.	DESCRIPTION	QTY
11	091-311-507	Reverse Idler Shaft Gear (16-Tooth)	1
12	113-311-519	Concave Washer for Reverse Idler Shaft Gear	1
13	N-012-417-1	Circlip For Rev. Idler Gear	1
14	H-SM8X62	M8 X 1.25 X 62MM Stud <i>Install with Loctite 272 (red)</i>	16
15	H-WM8-WAVE	8MM Wave Washer	22
16	H-NLM8	M8 X 1.25 Nyloc Nut for Set Screw <i>Torque to 18 ft. lb. with Loctite 243 (blue)</i>	22
17	H-DM12X25	M12X25 Dowel, Hardened Steel	2
18	H-PLUG-38PISD	3/8" Pipe Plug, Internal Socket Drive <i>Seal threads with 3-Bond sealant or equivalent</i>	1
19	H-PLUG-34UNFH	3/4-16 Fill Plug <i>Torque to 40 ft. lb. with Loctite 243 (blue)</i>	2



7200 Hollister Ave, Suite C
Goleta, CA 93117
Ph 805-562-8600 • Fax 805-562-8661
info@weddleindustries.com

Drawing No: MD2D-EXP-610
Drawing Name: MD2D Main Case Exp View
Drawn By: DL
Revised: 4/7/2025

MD2D MAIN CASE EXP VIEW



PAGE 2 OF 2

ITEM	PART NO.	DESCRIPTION	QTY
	20	H-WM19-SEAL Copper Sealing Washer	2
	21	MD-945 Load Bolt <i>Seal threads with 3-Bond sealant or equivalent</i>	1
	22	H-JN3416 3/4" Jam Nut Plated	1
	23	H-PLUG-18PISD 1/8" Pipe Plug <i>Seal threads with 3-Bond sealant or equivalent</i>	1
	24	MD-9SCS150 1.5" Sidecover Stud <i>Install with Loctite 272 (red)</i>	14
	25	H-WM10 10MM Flat Washer, Hardened	16
	26	H-N3824 3/8-24 Hex Nut, Grade 8 <i>Torque to 28 ft. lb. with Loctite 243 (blue)</i>	16
	27	MD-9SCS200 Sidecover Stud, 2" for Clutch Cable Bracket <i>Install with Loctite 272 (red)</i>	2
	28	MD-940 Clutch Cable Guide	1
	29	MD-941 Spacer for Clutch Cable Guide	2
	30	H-SM8X38 M8 X 1.25 X 62MM STUB <i>Install with Loctite 272 (red)</i>	6

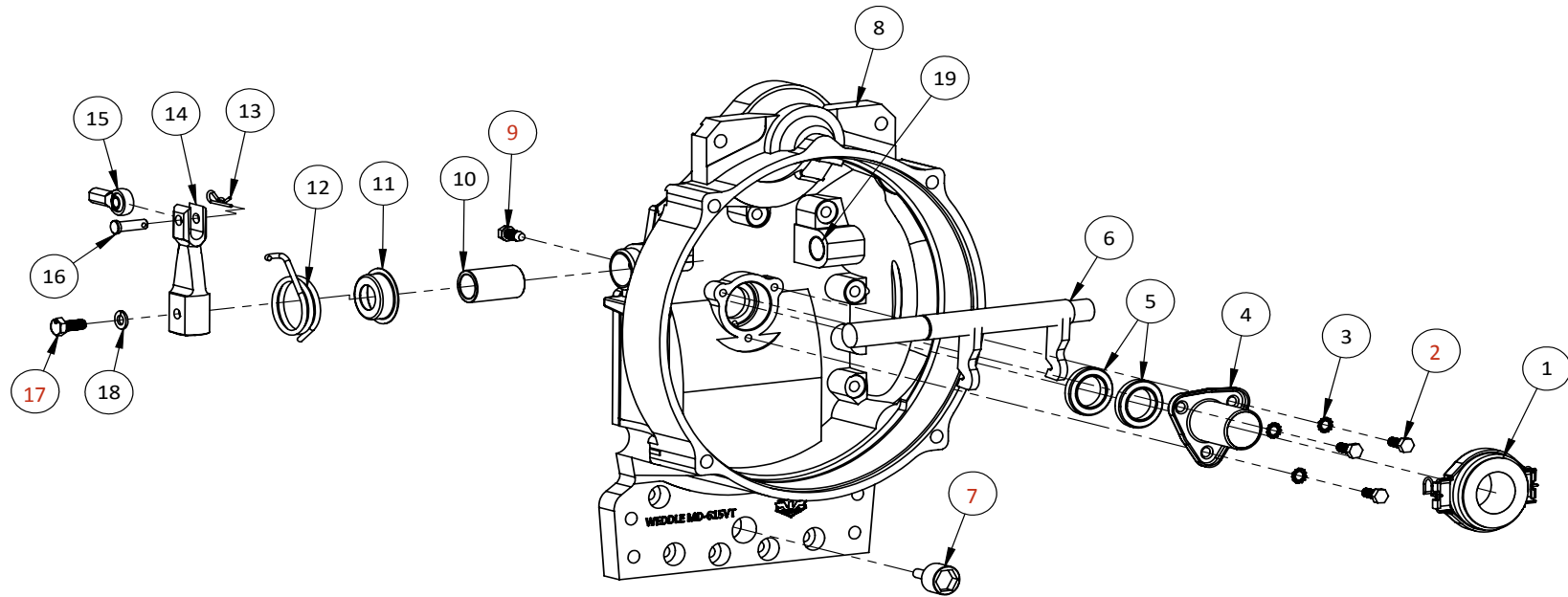
ITEM	PART NO.	DESCRIPTION	QTY
	31	H-D121000 1/2" X 1.000" Hardened Dowel Pin Early Case/Bellhousing only uses 4 dowels	6
	32	MD-610HD MD Main Case	1



7200 Hollister Ave, Suite C
Goleta, CA 93117
Ph 805-562-8600 • Fax 805-562-8661
info@weddleindustries.com

Drawing No: MD2D-EXP-615VT
Drawing Name: MD2D Bellhousing Exp View
Drawn By: DL
Revised: 3/17/2022

MD2D BELLHOUSING EXP VIEW



ITEM	PART NO.	DESCRIPTION	QTY
1	113-141-165-B	Throwout Bearing	1
2	H-BM7X16H	7mm Bolt for T/O Bearing Guide Sleeve <i>Torque to 14 ft. lb. with Loctite 243 (blue)</i>	3
3	H-WM7-STL	M7 Star Lock Washer	3
4	016-141-181	Support Sleeve T/O Bearing	1
5	MD2D-9113	Input Shaft Seals	2
6	091-141-701-K-5	Cross Shaft	1
7	091-301-141-A	Drain Plug, Long Magnet <i>Torque to 35 ft. lb. with Loctite 243 (Blue)</i>	1
8	MD-615VT	Top Start VW Bellhousing	1
9	113-311-141	Locating Bolt for Cross Shaft Bushing <i>Torque to 14 ft. lb. with Loctite 243 (Blue)</i>	1
10	9025	Cross Shaft Bushing	1

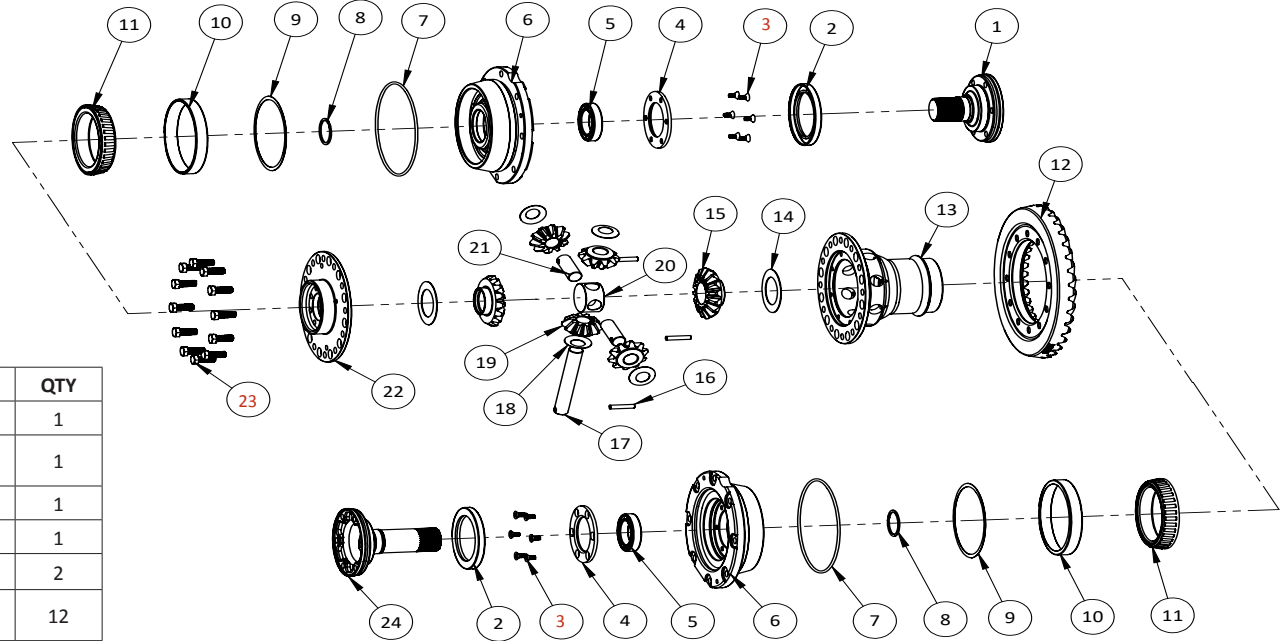
ITEM	PART NO.	DESCRIPTION	QTY
11	111-141-727-A	Spring Collar For Clutch Arm	1
12	113-141-723-D	Clutch Arm Return Spring	1
13	091-141-701-K-3	Cotter Pin	1
14	091-141-701-K-4	Cross Shaft Arm	1
15	091-141-701-K-1	Heim for Clutch Cross Shaft	1
16	091-141-701-K-2	Clevis Pin	1
17	H-BM8X20H	8mm Bolt for Cross Shaft Arm <i>Torque to 18 ft. lb. with Loctite 243 (blue)</i>	1
18	H-WM8-SPL	M8 Split Lock Washer	1
19	113-141-711-A	Bushing for Small End of Clutch Cross Shaft, Press Into Bell Housing	1



7200 Hollister Ave, Suite C
 Goleta, CA 93117
 Ph 805-562-8600 • Fax 805-562-8661
 info@weddleindustries.com

Drawing No: MD2D-EXP-DIFF
 Drawing Name: MD2D Diff Assembly Exp View
 Drawn By: DL
 Revised: 4/7/2025

MD2D DIFF ASSEMBLY EXP VIEW



ITEM	PART NO.	DESCRIPTION	QTY
1	MD-5930S	Short Drive Flange 930 CV Joint	1
(1)	HV-5930S	Short Drive Flange 930 CV Joint, HD	1
(1)	MD-5934S	Short Drive Flange 934 CV Joint	1
(1)	HV-5934S	Short Drive Flange 934 CV Joint, HD	1
2	MD-920	FD Seal	2
3	HV-926	Torx Bolt for Output Bearing Plate Torque 8 ft. lb. with LT-243 (blue)	12
4	MD-925	Final Drive Flange Bearing Retainer Plate	2
5	MD-422	Ball Bearing for Drive Flange	2
6	MD-6934	Side Cover	2
7	MD-922	Side Cover O-ring	2
8	MD-930	Spiral Lock for 930 Drive Flange	2
(8)	MD-934	Spiral Lock For HV-930 Drive Flange and 934 Flanges	2
9	MD-5###	Diff Shim (### denotes size)	As Needed
10	MD-420	Diff Bearing Cup	2
11	MD-421	Diff Bearing Cone	2
12	MD2D-RP###	MD2D Ring and Pinion (### denotes ratio)	1
13	MD-535	Diff Housing	1
14	MD-552	Sidegear Thrust Washer	2
15	MD-545HD	Sidegear Heavy Duty	2
16	H-D141375	Dowel Pin for Diff Cross Shaft	3
17	MD-538	Cross Shaft, Long	1

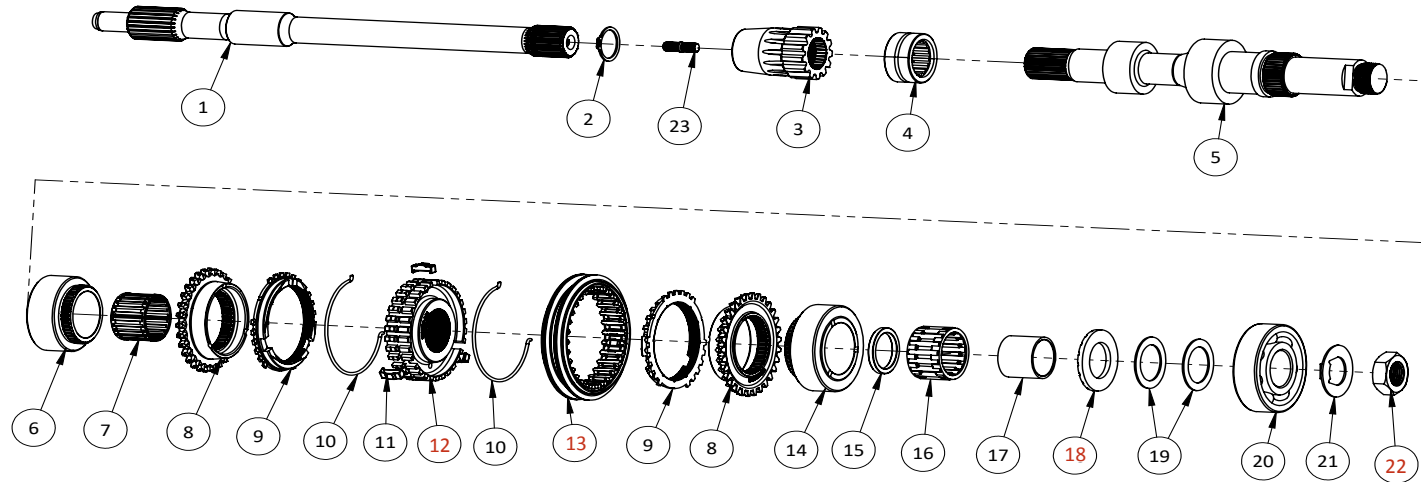
ITEM	PART NO.	DESCRIPTION	QTY
18	MD-551	Spider Gear Thrust Washer	4
19	MD-550	Spider Gear	4
(19)	MD-550HD	Spider Gear Heavy Duty	4
20	MD-540	Diff Center Block	1
21	MD-539	Cross Shaft, Short	2
22	MD-530	Diff Cover	1
23	H-B38241000XHD	3/8-24X1.00" XHD Ring Gear Bolt Torque 55 ft. lb. with LT-272 (red)	12
(23)	H-B38241000ARP	3/8-24X1.00" ARP Ring Gear Bolt Torque 55 ft. lb. with LT-272 (red)	12
24	MD-5930L	Long Drive Flange 930 CV Joint	1
(24)	HV-5930L	Long Drive Flange 930 CV Joint HD	1
(24)	MD-5934L	Long Drive Flange 934 CV Joint	1
(24)	HV-5934L	Long Drive Flange 934 CV Joint HD	1



7200 Hollister Ave, Suite C
Goleta, CA 93117
Ph 805-562-8600 • Fax 805-562-8661
info@weddleindustries.com

Drawing No: MD2D-EXP-MS4
Drawing Name: MD2D Main Shaft Exp View
Drawn By: DL
Revised: 3/18/2022

MD2D MAIN SHAFT EXP VIEW



ITEM	PART NO.	DESCRIPTION	QTY
1	MD2D-9106	Input Shaft	1
2	MD2D-992	Input Shaft Circlip	1
3	MD2D-340	MD4/MD5 Input Coupler	1
4	MD2D-431	Rear Mainshaft Bearing 1.5"OD	1
(4)	MD2D-430	Rear Mainshaft Bearing (old design) 1.315"OD	1
5	WM-#####	MD4-2D Mainshaft (##### denotes ratio)	1
6	WM-####	3RD Idler (### denotes ratio)	1
7	4-323626S	Neddle Bearing for 3rd gear 1.56 & Lower Ratio	1
(7)	4-323826S	Neddle Bearing for 3rd gear 1.50 & Taller Ratio	1
8	8C6-CONE	Synchro Cone for 3rd Gear 1.56 & lower ratios	2
(8)	8C8-CONE	Synchro Cone for 3rd Gear 1.50 & taller ratios	2
9	113-311-295-D	113/003 3-4 Synchro	2
10	113-309-311	Double Ended Wire Spring For Slider Hub Assy	2
11	113-309-313	113/002 3-4 Catch Key	3
12	MD2D-844	3-4 Slider Hub Identifying groove on OD of hub goes to 3rd gear	1

ITEM	PART NO.	DESCRIPTION	QTY
13	091-311-315	3-4 Slider Machined groove on side of slider faces 4th gear (opposite of the groove on hub)	1
14	WC-####	4th Idler (### denotes ratio)	1
15	9010	Retaining Spacer For 3-4 Slider Hub	1
16	4-323626	Needle Bearing For 4th Gear 1.56 & lower ratio	1
(16)	4-323826	Neddle Bearing for 4th Gear 1.50,1.47, &1.44 idler with 38mm bore	1
(16)	4-324025	Neddle Bearing For 4th Gear 1.39 idler & taller ratios	1
17	4010	4th Gear Bearing Race	1
18	002-311-151-A	4th Gear Thrust Washer Oil Grooves face 4th Gear	1
19	MD2D-904-0##	2D Mainshaft Shaft Shim (28MM I.D.) (## denotes shim thickness)	2
20	MD2D-425	Front Mainshaft Bearing	1
21	113-309-381-A	Folding Lock For Mainshaft	1
22	113-309-385	Nut For End Of Main Shaft Torque to 120 ft. lb., back off and re-torque to 95 ft. lb. with Loctite 272 (red)	1
23	N-902-210-01	Connecting Stud, Input Shaft to Mainshaft	1

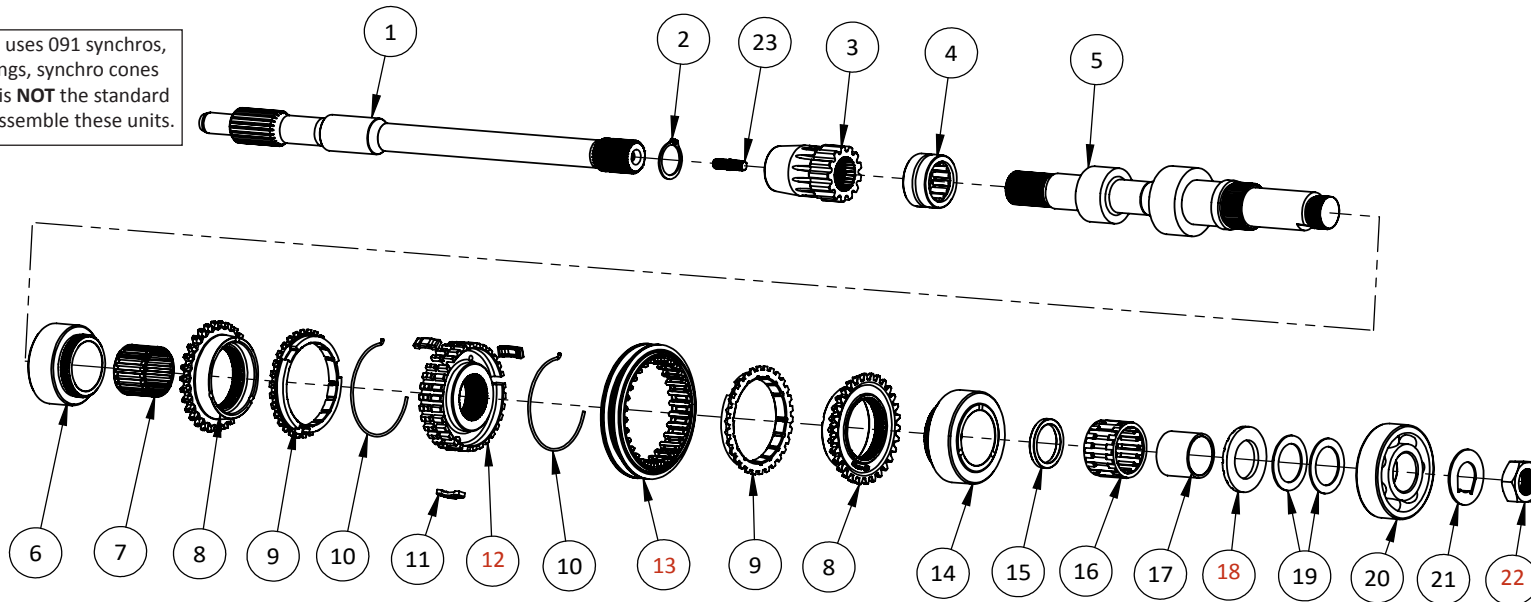


7200 Hollister Ave, Suite C
Goleta, CA 93117
Ph 805-562-8600 • Fax 805-562-8661
info@weddleindustries.com

Drawing No: MD2D-EXP-MS4-091
Drawing Name: MD2D Main Shaft Exp View
Drawn By: DL
Revised: 3/18/2022

MD2D MAIN SHAFT EXP VIEW USING 091 SYNCHRONIZERS

Note: This assembly uses 091 synchros, slider hub, wire springs, synchro cones and catch keys, this is **NOT** the standard way most builders assemble these units.



ITEM	PART NO.	DESCRIPTION	QTY
1	MD2D-9106	Input Shaft	1
2	MD2D-992	Input Shaft Circlip	1
3	MD2D-340	MD4/MD5 Input Coupler	1
4	MD2D-431	Rear Mainshaft Bearing 1.5"OD	1
(4)	MD2D-430	Rear Mainshaft Bearing (old design) 1.315"OD	1
5	WM-#####	MD4-2D Mainshaft (##### denotes ratio)	1
6	WM-###I	3RD Idler (### denotes ratio)	1
7	4-323626S	Neddle Bearing for 3rd gear 1.56 & Lower Ratio	1
(7)	4-323826S	Neddle Bearing for 3rd gear 1.50 & Taller Ratio	1
8	8D6-CONE	Synchro Cone for 3rd Gear 1.56 & lower ratios	2
(8)	8D8-CONE	Synchro Cone for 3rd Gear 1.50 & taller ratios	2
9	091-311-295-A	091/094 3-4 Synchro	2
10	113-311-249-A	Single Ended Wire Spring For Slider Hub Assy	2
11	091-311-313	091/094 3-4 Catch Key	3
12	091-311-309-HD	091 3-4 Slider Hub Heavy Duty Identifying groove on OD of hub goes to 3rd gear	1

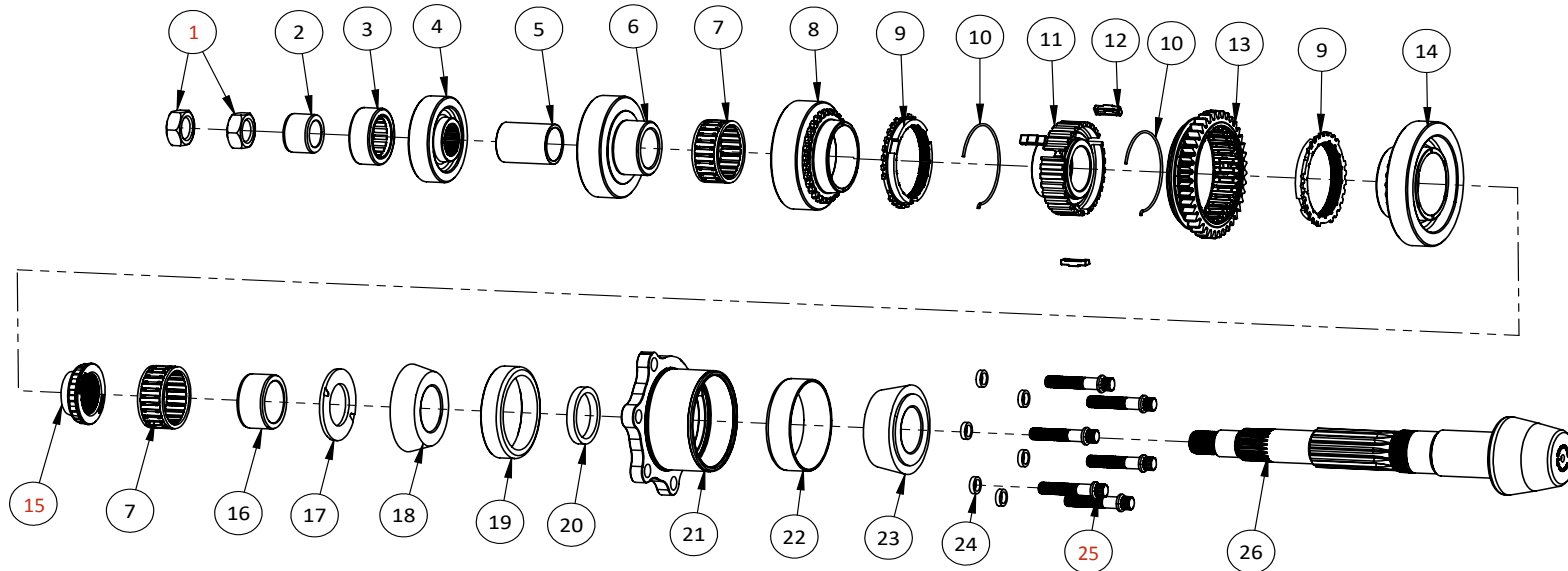
ITEM	PART NO.	DESCRIPTION	QTY
13	091-311-315	3-4 Slider Machined groove on side of slider faces 4th gear (opposite of the groove on hub)	1
14	WC-####I	4th Idler (### denotes ratio)	1
15	9010	Retaining Spacer For 3-4 Slider Hub	1
16	4-323626	Needle Bearing For 4th Gear 1.56 & lower ratio	1
(16)	4-323826	Neddle Bearing for 4th Gear 1.50, 1.47, & 1.44 idler with 38mm bore	1
(16)	4-324025	Neddle Bearing For 4th Gear 1.39 idler & taller ratios	1
17	4010	4th Gear Bearing Race	1
18	002-311-151-A	4th Gear Thrust Washer Oil Grooves face 4th Gear	1
19	MD2D-904-0##	2D Mainshaft Shaft Shim (28MM I.D.) (## denotes shim thickness)	2
20	MD2D-425	Front Mainshaft Bearing	1
21	113-309-381-A	Folding Lock For Mainshaft	1
22	113-309-385	Nut For End Of Main Shaft Torque to 120 ft. lb., back off and re-torque to 95 ft. lb. with Loctite 272 (red)	1
23	N-902-210-01	Connecting Stud, Input Shaft to Mainshaft	1



7200 Hollister Ave, Suite C
Goleta, CA 93117
Ph 805-562-8600 • Fax 805-562-8661
info@weddleindustries.com

Drawing No: MD2D-EXP-PS4
Drawing Name: MD2D Pinion Shaft Exp View
Drawn By: DL
Revised: 4/7/2025

MD2D PINION SHAFT EXP VIEW



ITEM	PART NO.	DESCRIPTION	QTY
1	H-JN3416	3/4" Jam Nut Plated Torque to 120 ft.lb. Loctite 272 (red)	2
2	MD2D-424	Front Pinion Bearing Inner Race Use with bearing MD5-401	1
3	MD5-401	Front Pinion Bearing Use with bearing race MD2D-424	1
4	WC-####S-4	4th Splined (#### denotes ratio)	1
5	MD2D-903	3-4 Spacer	1
6	WM-####S-3	3rd Splined (#### denotes ratio)	1
7	113-311-265-S	1-2 Steel Cage Needle Bearing	2
8	WM-####I	2nd Gear Idler (#### denotes ratio)	1
9	091-311-295-D	3-4 Synchro	2
10	113-311-249-A	Single Ended Wire Spring	2
11	MD2D-843	1-2 Slider Hub	1
12	014-311-313	1-2 Synchro Catch Key	3
13	091-311-255	1-2 Slider	1
14	WM-####I	1st Gear Idler (#### denotes ratio)	1

ITEM	PART NO.	DESCRIPTION	QTY
15	113-311-237-A	Pinion Bearing Preload Nut Torque 152 ft. lb. with LT-272 (red) Peen lock tab after tightening	1
16	113-311-227-F-RU	1st Gear Bearing Race	1
17	113-311-221-A	1st Gear Thrust Washer with Oil Slots	1
18	MD-403	Pinion Bearing Cone, Small	1
19	MD-404	Pinion Bearing Cup, Small	1
20	MD-407-####	Pinion Bearing Preload Spacer (#### denotes thickness)	1
21	MD-402HD	Pinion Bearing Carrier	1
22	MD-406	Pinion Bearing Cup, Large	1
23	MD-405	Pinion Bearing Cone, Large	1
24	MD-956	3/8" High Collar Lock Washer	6
25	H-B38241750FC	Pinion Retainer Bolt Torque to 38 ft. lb. with Loctite 272 (red)	6
26	MD2D-RP####	Ring & Pinion (#### denotes ratio)	1



7200 Hollister Ave, Suite C
 Goleta, CA 93117
 Ph 805-562-8600 • Fax 805-562-8661
 info@weddleindustries.com

Drawing No: MD2D-EXP-SHIFT
 Drawing Name: MD2D Shift Assembly Exp View
 Drawn By: DL
 Revised: 4/7/2025

MD2D SHIFT ASSEMBLY EXP VIEW

ITEM	PART NO.	DESCRIPTION	QTY
1	113-311-561-C	3-4 Shift Fork	1
2	H-WM8-14	8MM Flat Washer, 14.3MM OD	2
3	H-BM8X25XHD	Shift Fork Bolt Torque to 18 ft. lb. with Loctite 243 (blue)	2
4	113-311-551-A	1-2 Fork, Steel	1
5	311-311-567-HD	3-4 Shift Rail	1
6	111-307-629	Shift Rail Interlock	2
7	MD2D-812HD	2D 1-2 Shift Rail	1
8	113-311-541-C-HD	Hockey Stick / Shift Shaft	1
9	113-311-577-A-U	Reverse Shift Rail	1
10	113-311-581-F	Reverse Pivot Lever	1
11	MD2D-820	2D Reverse Pivot Block (Aluminum)	1
12	H-WM7	M7 Flat Washer, Hardened	1
13	H-BM7X25H	Bolt for Rev Pivot Block Torque to 14 ft. lb. with Loctite 243 (blue)	1

