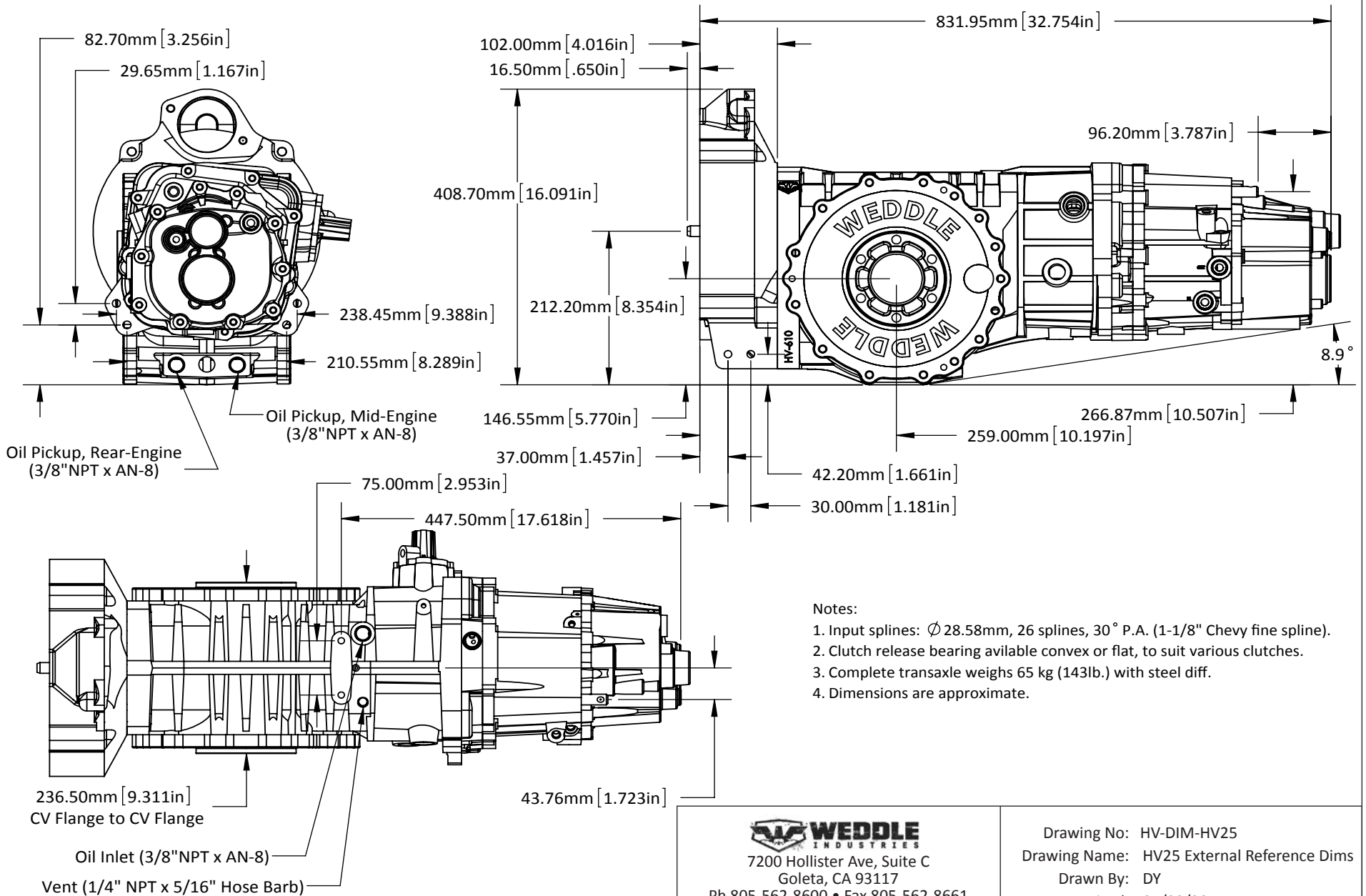


# WEDDLE HV25 EXTERNAL REFERENCE DIMENSIONS



**Notes:**

1. Input splines:  $\varnothing$  28.58mm, 26 splines, 30° P.A. (1-1/8" Chevy fine spline).
2. Clutch release bearing available convex or flat, to suit various clutches.
3. Complete transaxle weighs 65 kg (143lb.) with steel diff.
4. Dimensions are approximate.



7200 Hollister Ave, Suite C  
 Goleta, CA 93117  
 Ph 805-562-8600 • Fax 805-562-8661  
 info@weddleindustries.com

Drawing No: HV-DIM-HV25  
 Drawing Name: HV25 External Reference Dims  
 Drawn By: DY  
 Revised: 04/09/20