



WEDDLEINDUSTRIES.COM

8-S45-DM-A

Updated 4/29/22

DASH DISPLAY MODULE FOR WEDDLE S45/S45D

INSTALLATION NOTES

GENERAL NOTES

Weddle part # 8-S45-DM-A is designed to work with Weddle Sequential transaxles fitted with the Gen 3 ratchet mechanism. These transaxles should be supplied with the potentiometer installed on the front housing. The Weddle part number for the potentiometer is ST6-20850, if not installed the fitment instructions are below. The dash display will read N-1-2-3-4-5 depending on whether the unit is a 4-speed or a 5-speed transaxle. Reverse gear can only be selected when the trans is in Neutral.

SYSTEM INCLUDES

- Billet Aluminum enclosure with Red 16 Segment 1.2" LED Display with 1' of cable.
- Transaxle gear sensor provided by Weddle with mounting hardware.
- 10' of sensor cable with connector.

POTENTIOMETER INSTALLATION

1. Block wheels of vehicle so it can't roll.
2. Place transaxle in neutral.
3. Check the mounting boss/hole, you should see the slot in the ratchet shaft. If the vehicle is in neutral the slot should be in the 12 and 6 position.
4. Make sure the potentiometer guide is in place, WI part #S45-606-52. (REF: Drawing S45-EXP-605-GEN3)
5. Orient the potentiometer so that the wiring loom is in the 12 o'clock position and the divot on the spade is in the 6 o'clock position. (REF: Drawing S45-EXP-605-GEN3)
6. Slide the potentiometer in place. It should sit flush on the cover with very little force.
7. Place Loctite on the threads of the mounting screws and install loosely.
8. Rotate the sensor clockwise until the screws stop the sensor in the mounting slots. (REF: Drawing S45-EXP-605-GEN3)
9. Tighten the sensor mounting screws.

DISPLAY INSTALLATION

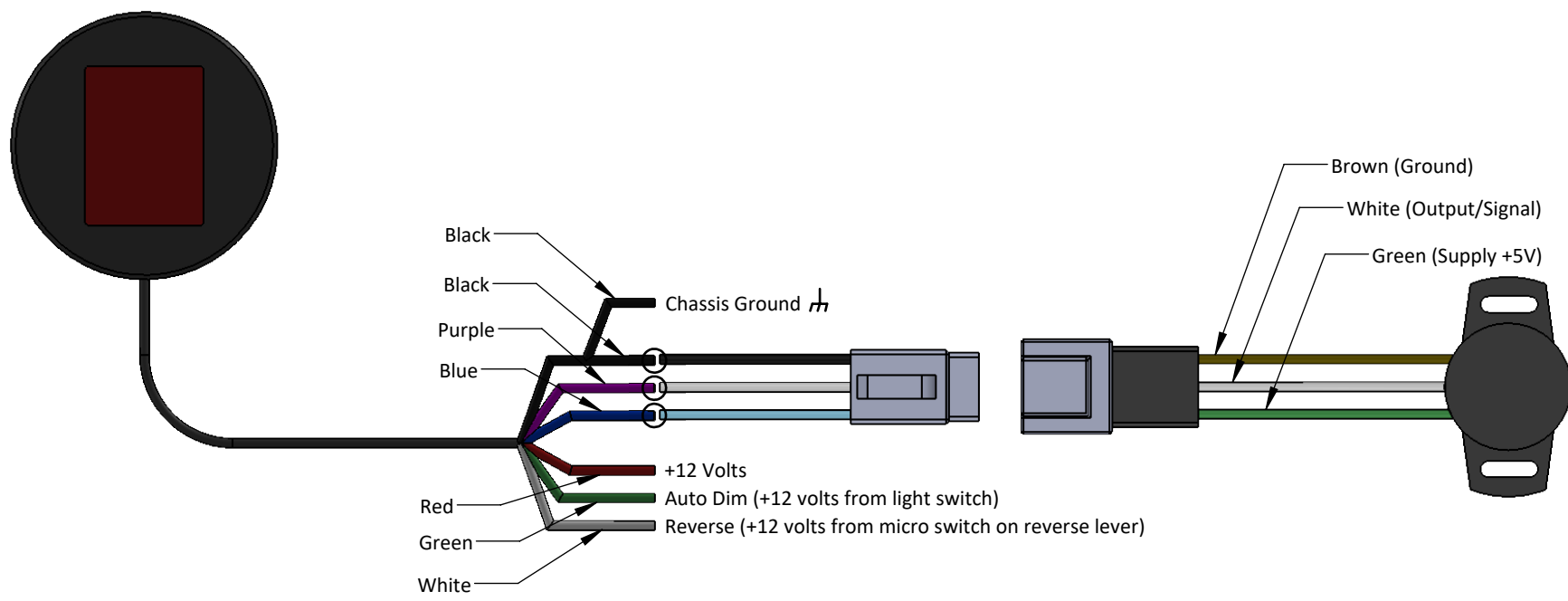
The gear indicator display mounts from the front side of the instrument panel through a 2 1/16" hole. After sliding the display through the hole place the "U" shaped hold down strap over the 2, 8/32" studs on the side of the display and tighten the wing nuts.


SYSTEM WIRING

It is recommended that all connections be soldered and sealed with heat shrink or made with sealed electrical connectors. Use good quality automotive style stranded 20 gauge wire. Included with the gear indicator is a 10" wiring loom to connect to the potentiometer.

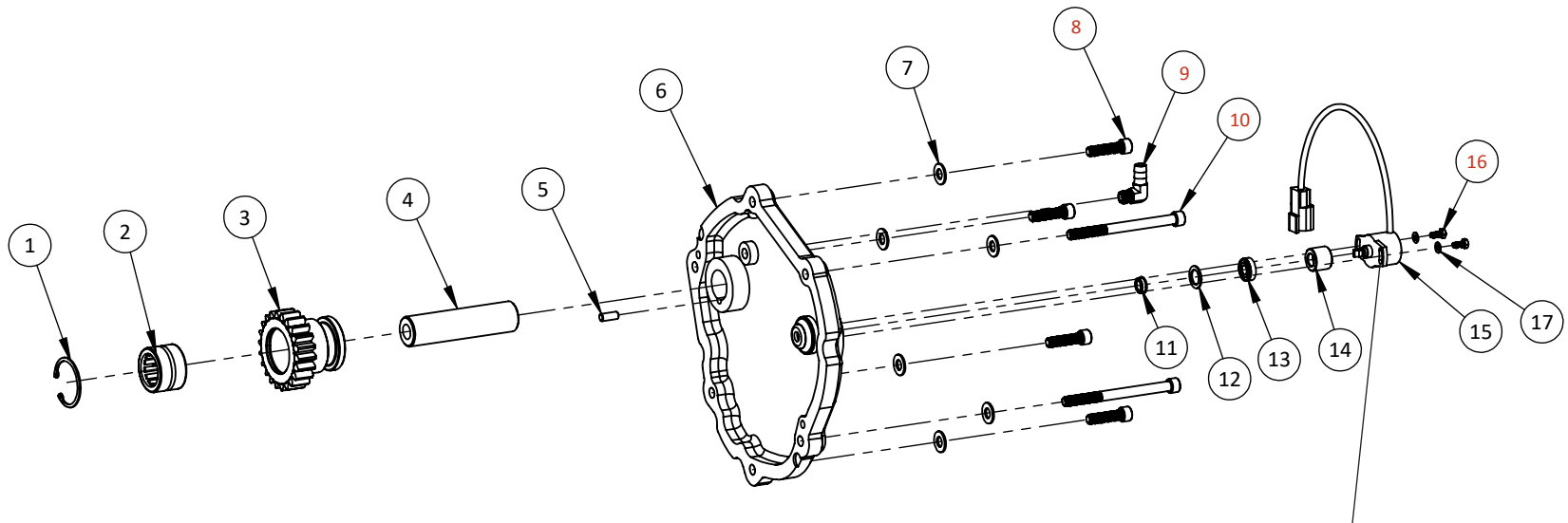
1. Plug the potentiometer wiring loom into the connector and run the wires forward to the display location. Avoid sharp bends whenever possible and protect the wires where necessary.
2. Connect the sensor wiring to the display as shown in diagram. (REF: Drawing 8-S45-DM-A)
3. The Red wire from the display is connected to a switched 12V power source to turn the display on and off with the ignition. Use a .5 A fast acting fuse for protection.
4. The green wire from the display is Auto Dim, connect this to the switched side of the light switch. This will automatically dim the display when the lights are on for night driving.
5. The white wire from the display is optional, use only if a reverse switch is mounted on the transaxle. Place a normally open micro switch on the transaxle so it will close when reverse is selected. Connect 12V to the switch so that when the switch is closed the 12V is connected to the white wire.
6. The black wire from the display is ground, attach to the negative side of the battery or a ground strap.

WIRING DIAGRAM FOR SEQUENTIAL DISPLAY MODULE 8-S45-DM-A

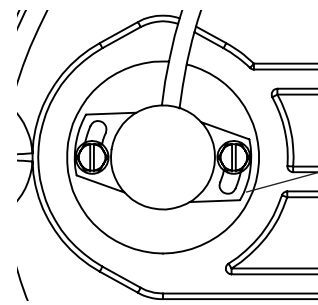


 WEDDLE INDUSTRIES	Drawing No: 8-S45-DM-A
	Drawing Name: S45 Display Wiring Diagram
	Drawn By: DL
	Revised: 4/29/2022
7200 Hollister Ave, Suite C Goleta, CA 93117 Ph 805-562-8600 • Fax 805-562-8661 info@weddleindustries.com	

WEDDLE S4/S5 FRONT COVER GEN 3 EXPLODED VIEW



IMPORTANT: When installing potentiometer, the wire loom points up, and the dimple on the spade points down.



Rotate the sensor clockwise until the screws stop the sensor in the mounting slots.

ITEM	PART NO.	DESCRIPTION	QTY
1	S45-987	Circlip for Bearing in Reverse Intermediate Idler	1
2	S45-411	Reverse Intermediate Idler Bearing	1
3	WS-RI	Reverse Intermediate Idler	1
4	S45-960	Reverse Idler Shaft	1
5	H-D140625	Dowel Pin for Reverse Idler Shaft	1
6	S45-606-46A	Front Cover for Gen 3 Shift Housing Assembly	1
7	H-WM8-17	8mm Flat Washer, 17.6mm O.D.	6
8	H-B516181250SH	5/16-18 X 1.250" Socket Head Bolt <i>Torque to 18 ft.lb. with Loctite 243 (blue)</i>	4
9	H-VENT-18PX38B-90	1/8" NPT X 3/8", 90 Degree Vent <i>Use 3-bond or equivalent sealant on threads</i>	1
10	H-B516184000SH	5/16-18 X 4.000" Socket Head Bolt <i>Torque to 18 ft.lb. with Loctite 243 (blue)</i>	2
11	S45-606-47	Support bearing for ratchet shaft	1
12	S45-606-49	Retaining washer	1
13	S45-606-51	Seal for Indicator Shaft	1
14	S45-606-52	Potentiometer Guide	1
15	ST6-20850	Contactless potentiometer	1
16	H-BM4X10SH	6X10mm Cap Screw <i>Use Loctite 243 (blue)</i>	2
17	H-WM4	M4 Flat Washer	2



7200 Hollister Ave, Suite C
Goleta, CA 93117
Ph 805-562-8600 • Fax 805-562-8661
info@weddleindustries.com

Drawing No: S45-EXP-605-GEN3
Drawing Name: S45 Front Cover Exploded View
Drawn By: DL
Revised: 4/14/2022